

# 200 Series GC

Application Note

Analysis of DMS in Malt

Application Number: 006



- 1 Dimethyl Sulphide (DMS)
- 2 Isopropyl Sulphide (Internal Standard)

**Column:** 2.0m 1/4" OD Glass Packed  
8% FFAP on 100/120 Chromasorb  
W-HP

**Sample** 1 ml Headspace

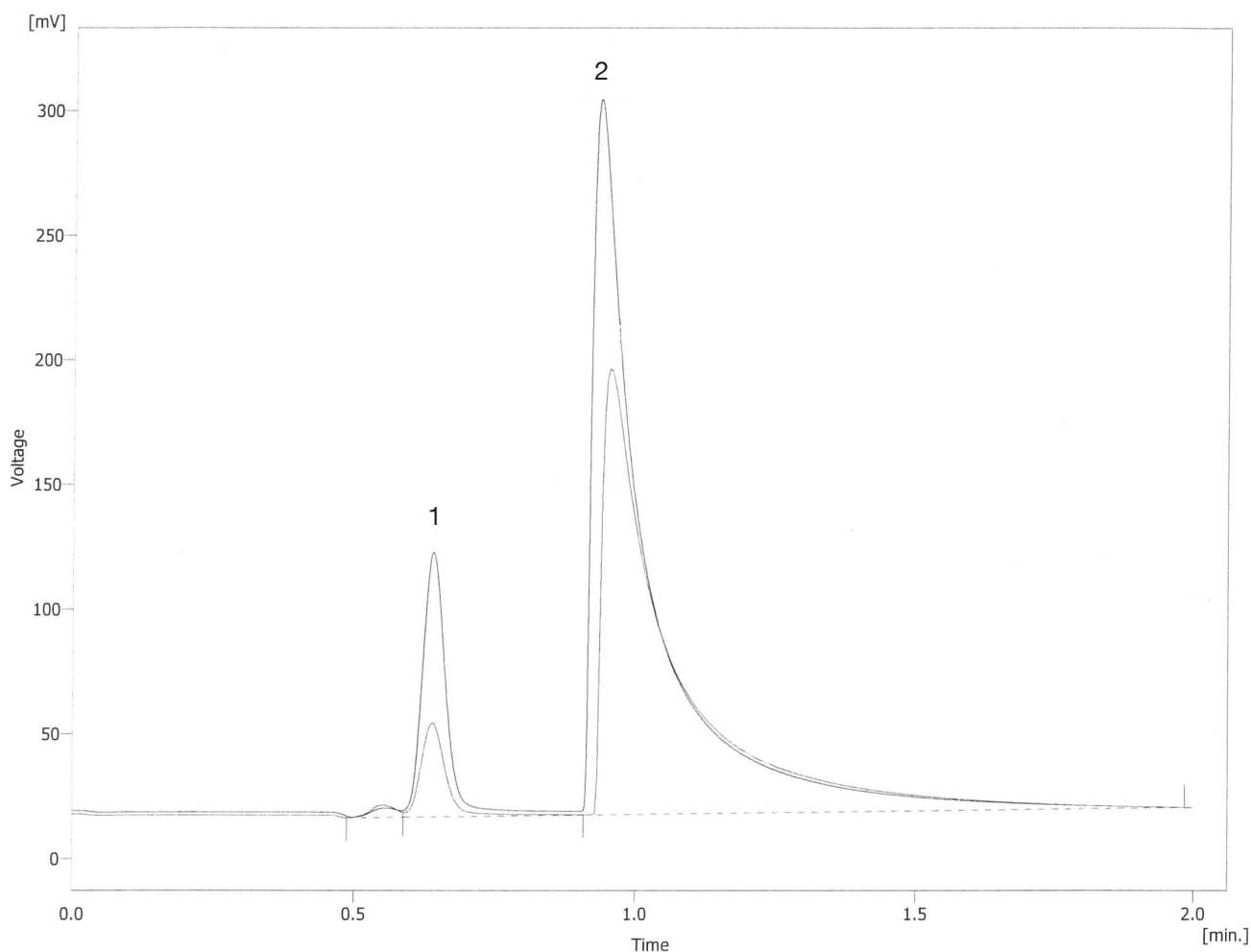
**Injector:** Split/splitless @ 150°C

**Split Flow:** 10 ml/min

**Temperature** Isothermal 80°C

**Programme:**

**Detector:** FID @ 220°C  
Range x 10



**UK** Tel: 01353 669916 Fax: 01353 669917  
**USA** Tel: 843 614 3640 Fax: 843 614 3642  
**Germany** Tel: 0561 400 0430 Fax: 0561 400 0429  
**Email:** info@ellutia.com **Website:** <http://www.ellutia.com>